

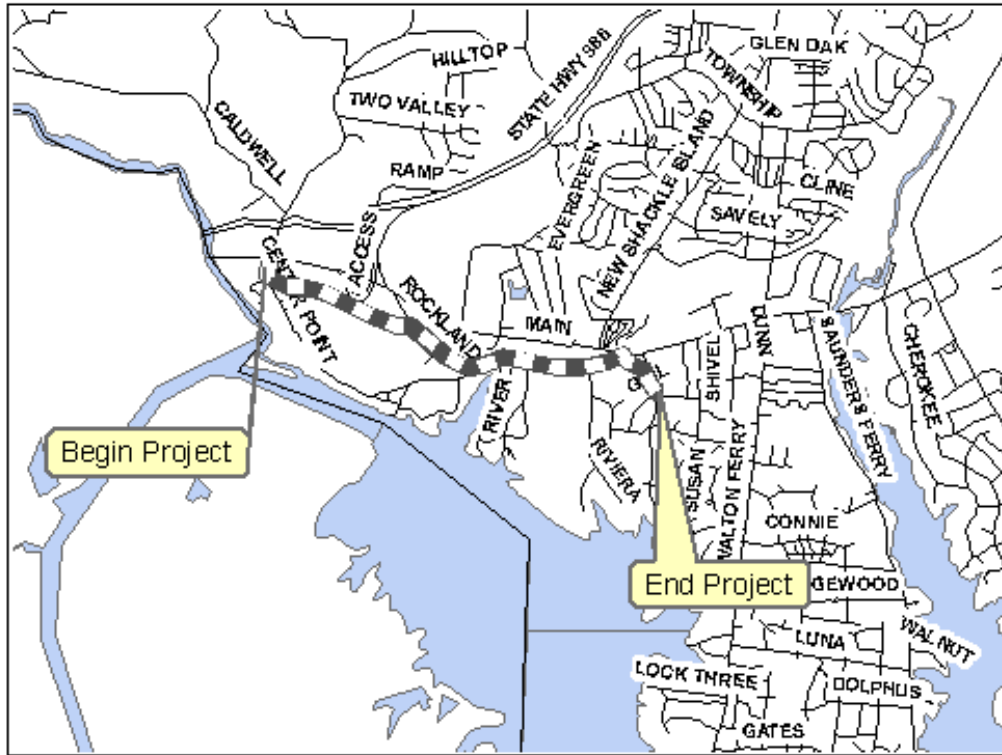


# Nashville Area MPO Fiscal Years 2011-2015 Transportation Improvement Program

TIP #	<input type="text" value="2002-028"/>	TDOT PIN #	<input type="text"/>	Improvement Type	<input type="text" value="New Roadway"/>	Lead Agency	<input type="text" value="Hendersonville"/>
County	<input type="text" value="Sumner"/>	Length	<input type="text" value="3.0"/> mi	RTP#	<input type="text" value="1052-177"/>	Conformity Status	<input type="text" value="Non-Exempt"/>
Route/Project Name	<input type="text" value="Rockland Road/Imperial Boulevard"/>					Total Project Cost	<input type="text" value="\$12,624,690"/>
Termini or Intersection	<input type="text" value="Center Point Road to Imperial Boulevard"/>						
Project Description	<input type="text" value="Widen Rockland Rd from 2-LN to 3-LN extend to Center Point Rd. Includes extension of NSI Rd from Main St to Rockland, a grade-separated RR crossing &amp; improvements to Center Point. Move RR bridge @ Free Hill Rd &amp; re-align. Bike/ped facilities included."/>						

Fiscal Year	Type of Work	Funding Type	Total Funds	Fed Funds	State Funds	Local Funds
<input type="text" value="2011"/>	<input type="text" value="PE"/>	<input type="text" value="LOCAL"/>	<input type="text" value="\$14,375"/>	<input type="text"/>	<input type="text"/>	<input type="text" value="\$14,375"/>
<input type="text" value="2011"/>	<input type="text" value="ROW/UTILITIES"/>	<input type="text" value="U-STP"/>	<input type="text" value="\$4,702,085"/>	<input type="text" value="\$3,761,668"/>	<input type="text"/>	<input type="text" value="\$940,417"/>
<input type="text" value="2011"/>	<input type="text" value="CONST"/>	<input type="text" value="U-RSV"/>	<input type="text" value="\$4,312,500"/>	<input type="text" value="\$3,450,000"/>	<input type="text"/>	<input type="text" value="\$862,500"/>
<input type="text" value="2012"/>	<input type="text" value="CONST"/>	<input type="text" value="U-RSV"/>	<input type="text" value="\$2,875,000"/>	<input type="text" value="\$2,300,000"/>	<input type="text"/>	<input type="text" value="\$575,000"/>

Amendment 1 #	<input type="text"/>	Adjustment 1 #	<input type="text"/>	Remarks	
Amended on	<input type="text"/>	Adjusted on	<input type="text"/>		
Amendment 2 #	<input type="text"/>	Adjustment 2 #	<input type="text"/>		
Amended on	<input type="text"/>	Adjusted on	<input type="text"/>		



This map is for illustrative purposes only. Drawings depict conceptual project corridors and areas, not approved alignments.





# Nashville Area MPO Fiscal Years 2011-2015 Transportation Improvement Program

TIP #	<input type="text" value="2004-010"/>	TDOT PIN #	<input type="text" value="103510.00"/>	Improvement Type	<input type="text" value="Pedestrian"/>	Lead Agency	<input type="text" value="Springfield"/>
County	<input type="text" value="Robertson"/>	Length	<input type="text"/> mi	RTP#	<input type="text" value="1036-278"/>	Conformity Status	<input type="text" value="Exempt"/>
Route/Project Name	<input type="text" value="Central Business District Sidewalks"/>					Total Project Cost	<input type="text" value="\$1,601,424"/>
Termini or Intersection	<input type="text" value="5th Avenue; Memorial Blvd to Willow and Locust to Springfield Middle School"/>						
Project Description	<input type="text" value="Construct sidewalks in the Central Business District"/>						

Fiscal Year	Type of Work	Funding Type	Total Funds	Fed Funds	State Funds	Local Funds
<input type="text" value="2011"/>	<input type="text" value="CONST"/>	<input type="text" value="U-STP"/>	<input type="text" value="\$151,975"/>	<input type="text" value="\$121,580"/>	<input type="text"/>	<input type="text" value="\$30,395"/>
<input type="text"/>	<input type="text"/>	<input type="text"/>	<input type="text"/>	<input type="text"/>	<input type="text"/>	<input type="text"/>
<input type="text"/>	<input type="text"/>	<input type="text"/>	<input type="text"/>	<input type="text"/>	<input type="text"/>	<input type="text"/>
<input type="text"/>	<input type="text"/>	<input type="text"/>	<input type="text"/>	<input type="text"/>	<input type="text"/>	<input type="text"/>

Amendment 1 #	<input type="text"/>	Adjustment 1 #	<input type="text"/>	Remarks <div style="border: 1px solid black; height: 100px;"></div>
Amended on	<input type="text"/>	Adjusted on	<input type="text"/>	
Amendment 2 #	<input type="text"/>	Adjustment 2 #	<input type="text"/>	
Amended on	<input type="text"/>	Adjusted on	<input type="text"/>	



This map is for illustrative purposes only. Drawings depict conceptual project corridors and areas, not approved alignments.



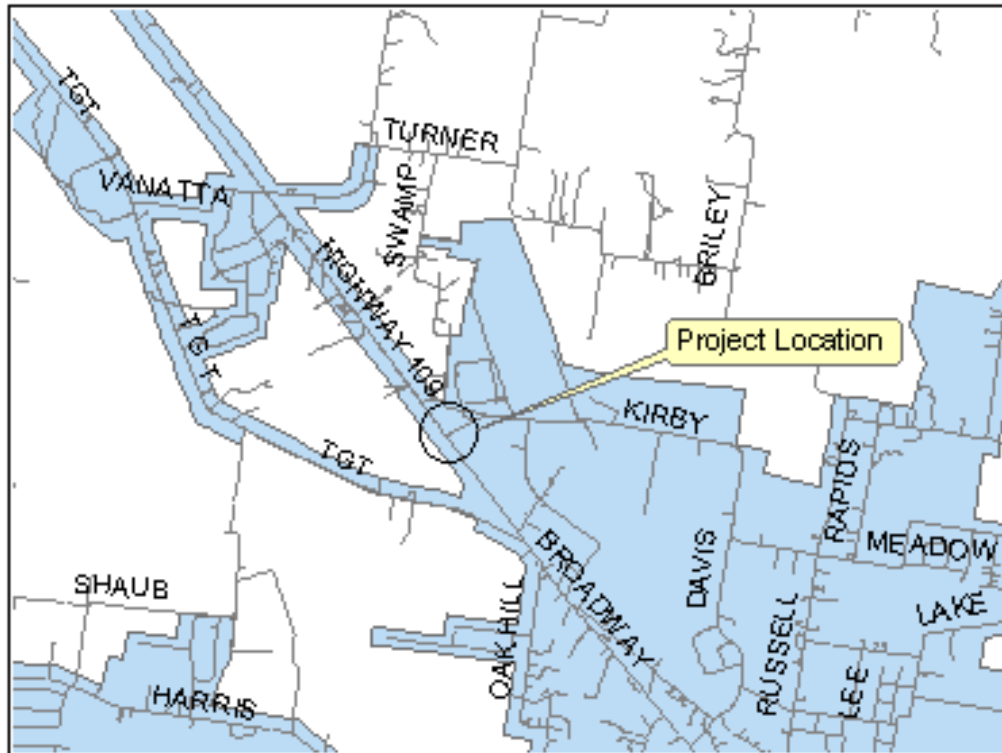


## Nashville Area MPO Fiscal Years 2011-2015 Transportation Improvement Program

TIP #	<input type="text" value="2004-020"/>	TDOT PIN #	<input type="text" value="106992.00"/>	Improvement Type	<input type="text" value="Intersection"/>	Lead Agency	<input type="text" value="Portland"/>
County	<input type="text" value="Sumner"/>	Length	<input type="text" value="0.0"/> mi	RTP#	<input type="text" value="1054-280"/>	Conformity Status	<input type="text"/>
Route/Project Name	<input type="text" value="SR-109 @ Kirby Drive"/>					Total Project Cost	<input type="text" value="\$665,845"/>
Termini or Intersection	<input type="text" value="Kirby Drive"/>						
Project Description	<input type="text" value="Install traffic signal and turn lanes from SR-109 onto Kirby and from Kirby onto SR-109"/>						

Fiscal Year	Type of Work	Funding Type	Total Funds	Fed Funds	State Funds	Local Funds
<input type="text" value="2011"/>	<input type="text" value="PE"/>	<input type="text" value="L-STP"/>	<input type="text" value="\$118,130"/>	<input type="text" value="\$118,130"/>	<input type="text"/>	<input type="text"/>
<input type="text" value="2011"/>	<input type="text" value="ROW"/>	<input type="text" value="L-STP"/>	<input type="text" value="\$157,000"/>	<input type="text" value="\$157,000"/>	<input type="text"/>	<input type="text"/>
<input type="text" value="2011"/>	<input type="text" value="CONST"/>	<input type="text" value="L-STP"/>	<input type="text" value="\$65,477"/>	<input type="text" value="\$65,477"/>	<input type="text"/>	<input type="text"/>
<input type="text" value="2011"/>	<input type="text" value="CONST"/>	<input type="text" value="U-STP"/>	<input type="text" value="\$325,238"/>	<input type="text" value="\$325,238"/>	<input type="text"/>	<input type="text"/>

Amendment 1 #	<input type="text"/>	Adjustment 1 #	<input type="text"/>	Remarks
Amended on	<input type="text"/>	Adjusted on	<input type="text"/>	
Amendment 2 #	<input type="text"/>	Adjustment 2 #	<input type="text"/>	
Amended on	<input type="text"/>	Adjusted on	<input type="text"/>	



This map is for illustrative purposes only. Drawings depict conceptual project corridors and areas, not approved alignments.

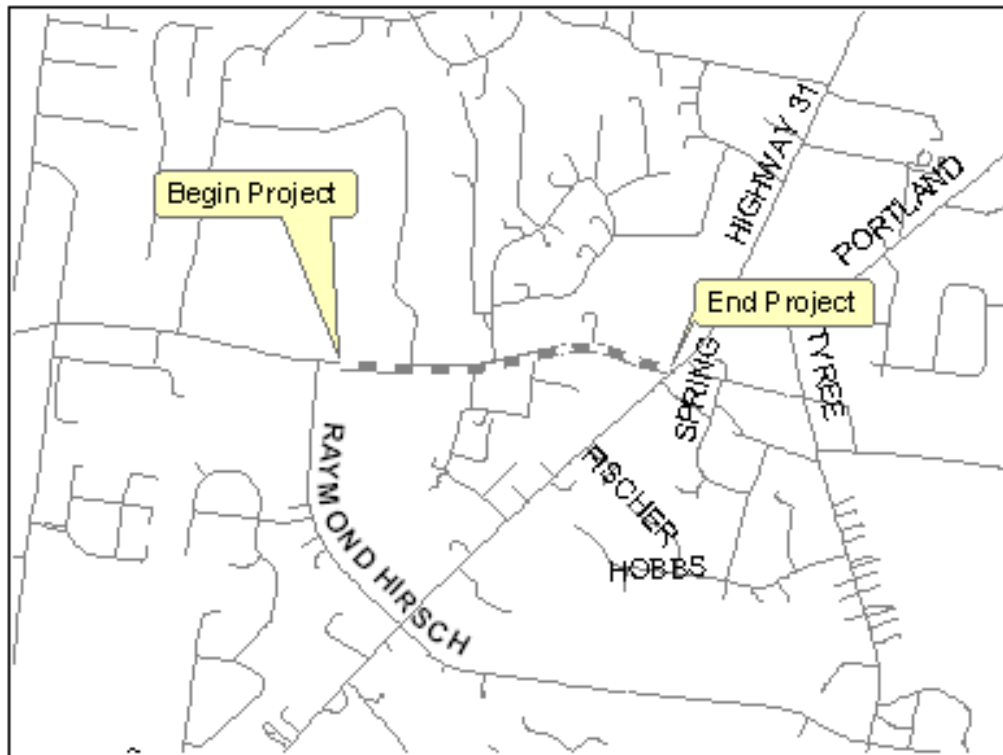


## Nashville Area MPO Fiscal Years 2011-2015 Transportation Improvement Program

TIP #	<input type="text" value="2004-022"/>	TDOT PIN #	<input type="text"/>	Improvement Type	<input type="text" value="Pedestrian"/>	Lead Agency	<input type="text" value="White House"/>
County	<input type="text" value="Robertson"/>	Length	<input type="text" value="0.0"/> mi	RTP#	<input type="text" value="1036-274"/>	Conformity Status	<input type="text" value="Exempt"/>
Route/Project Name	<input type="text" value="SR-76 Sidewalks"/>					Total Project Cost	<input type="text" value="\$765,811"/>
Termini or Intersection	<input type="text" value="East of Raymond Hirsch Pkwy to west of SR-41/US-31"/>						
Project Description	<input type="text" value="Construct sidewalks - upgrade to urbanized section, including curb and gutter"/>						

Fiscal Year	Type of Work	Funding Type	Total Funds	Fed Funds	State Funds	Local Funds
<input type="text" value="2011"/>	<input type="text" value="PE"/>	<input type="text" value="L-STP"/>	<input type="text" value="\$187,000"/>	<input type="text" value="\$149,600"/>	<input type="text" value="\$6,000"/>	<input type="text" value="\$31,400"/>
<input type="text" value="2011"/>	<input type="text" value="CONST"/>	<input type="text" value="U-RSV"/>	<input type="text" value="\$247,441"/>	<input type="text" value="\$197,953"/>	<input type="text" value="\$49,488"/>	<input type="text"/>
<input type="text" value="2011"/>	<input type="text" value="CONST"/>	<input type="text" value="L-STP"/>	<input type="text" value="\$331,370"/>	<input type="text" value="\$265,096"/>	<input type="text" value="\$66,274"/>	<input type="text"/>
<input type="text"/>	<input type="text"/>	<input type="text"/>	<input type="text"/>	<input type="text"/>	<input type="text"/>	<input type="text"/>

Amendment 1 #	<input type="text"/>	Adjustment 1 #	<input type="text"/>	Remarks          
Amended on	<input type="text"/>	Adjusted on	<input type="text"/>	
Amendment 2 #	<input type="text"/>	Adjustment 2 #	<input type="text"/>	
Amended on	<input type="text"/>	Adjusted on	<input type="text"/>	



This map is for illustrative purposes only. Drawings depict conceptual project corridors and areas, not approved alignments.

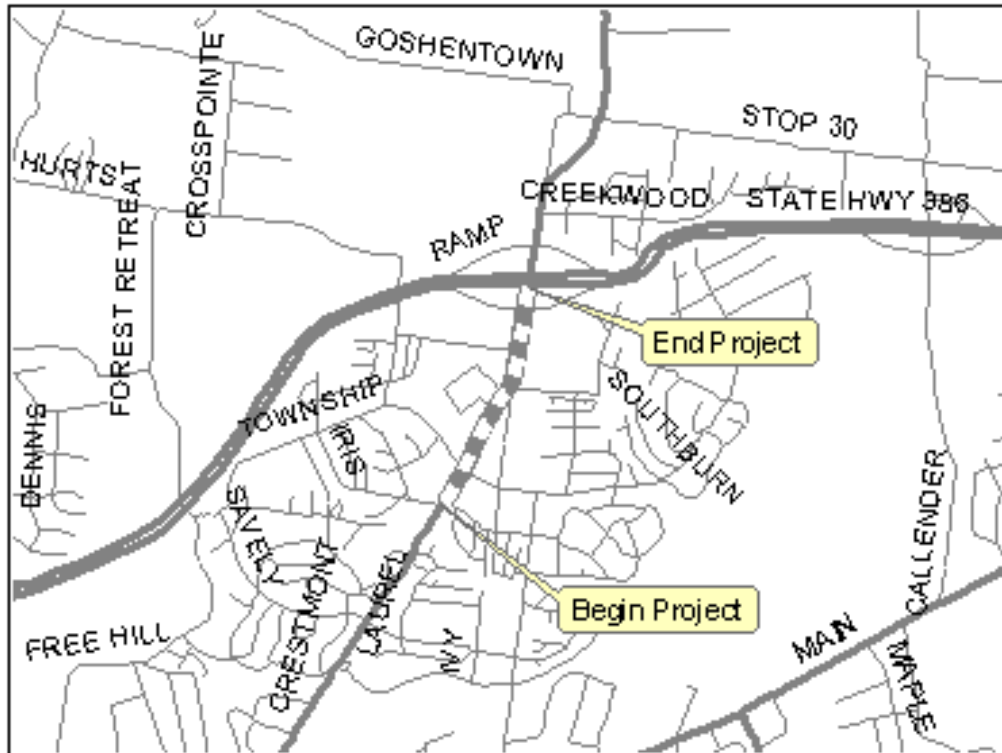


## Nashville Area MPO Fiscal Years 2011-2015 Transportation Improvement Program

TIP #	<input type="text" value="2006-014"/>	TDOT PIN #	<input type="text"/>	Improvement Type	<input type="text" value="Road Widening"/>	Lead Agency	<input type="text" value="Hendersonville"/>
County	<input type="text" value="Sumner"/>	Length	<input type="text" value="0.8"/> mi	RTP#	<input type="text" value="1052-176"/>	Conformity Status	<input type="text" value="Non-Exempt"/>
Route/Project Name	<input type="text" value="New Shackle Island Road (SR-258) - Phase 1"/>					Total Project Cost	<input type="text" value="\$4,964,644"/>
Termini or Intersection	<input type="text" value="Iris Drive north to SR-386 (Vietnam Veterans Blvd)"/>						
Project Description	<input type="text" value="Widen New Shackle Island Road from SR-386 to Iris Drive from 3 lanes to 5. Bike/ped facilities included."/>						

Fiscal Year	Type of Work	Funding Type	Total Funds	Fed Funds	State Funds	Local Funds
<input type="text" value="2011"/>	<input type="text" value="ROW/UTILITIES"/>	<input type="text" value="U-STP"/>	<input type="text" value="\$555,530"/>	<input type="text" value="\$444,424"/>	<input type="text"/>	<input type="text" value="\$111,106"/>
<input type="text" value="2011"/>	<input type="text" value="CONST"/>	<input type="text" value="U-RSV"/>	<input type="text" value="\$3,244,500"/>	<input type="text" value="\$2,595,600"/>	<input type="text"/>	<input type="text" value="\$648,900"/>
<input type="text" value="2011"/>	<input type="text" value="PE"/>	<input type="text" value="U-STP"/>	<input type="text" value="\$175,000"/>	<input type="text" value="\$140,000"/>	<input type="text"/>	<input type="text" value="\$35,000"/>
<input type="text"/>	<input type="text"/>	<input type="text"/>	<input type="text"/>	<input type="text"/>	<input type="text"/>	<input type="text"/>

Amendment 1 #	<input type="text"/>	Adjustment 1 #	<input type="text"/>	Remarks          
Amended on	<input type="text"/>	Adjusted on	<input type="text"/>	
Amendment 2 #	<input type="text"/>	Adjustment 2 #	<input type="text"/>	
Amended on	<input type="text"/>	Adjusted on	<input type="text"/>	



This map is for illustrative purposes only. Drawings depict conceptual project corridors and areas, not approved alignments.

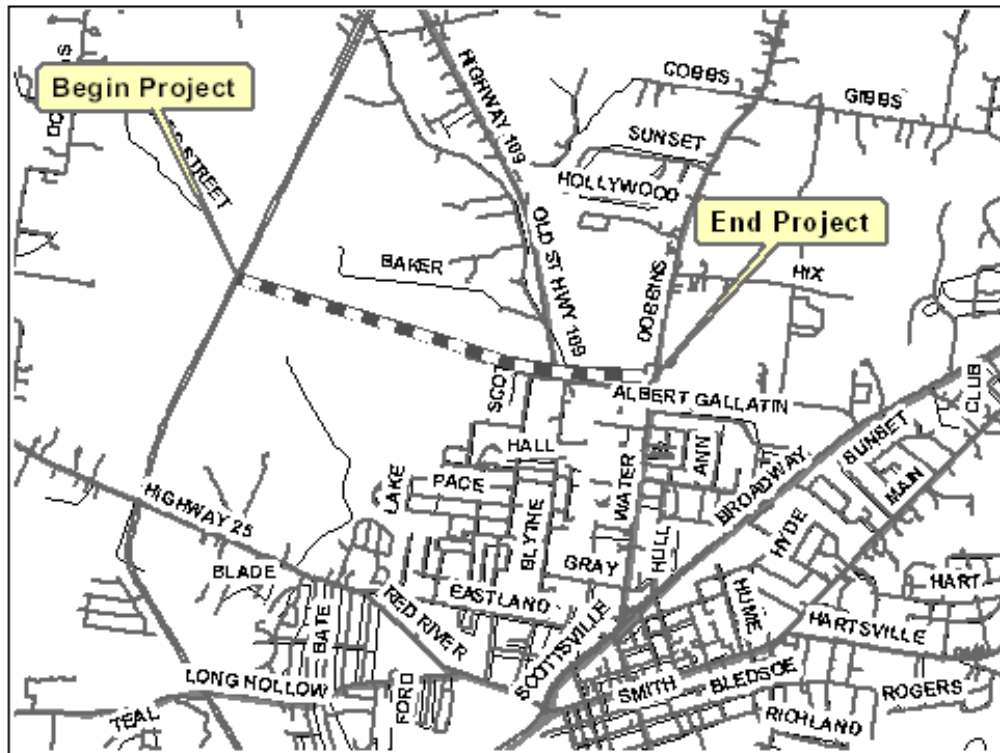


# Nashville Area MPO Fiscal Years 2011-2015 Transportation Improvement Program

TIP #	<input type="text" value="2008-51-032"/>	TDOT PIN #	<input type="text"/>	Improvement Type	<input type="text" value="New Roadway"/>	Lead Agency	<input type="text" value="Gallatin"/>
County	<input type="text" value="Sumner"/>	Length	<input type="text" value="0.8"/> mi	RTP#	<input type="text" value="1052-120"/>	Conformity Status	<input type="text" value="Non-Exempt"/>
Route/Project Name	<input type="text" value="East-West Corridor (Albert Gallatin Avenue (SR-174) / Hatten Track Road Extens"/>					Total Project Cost	<input type="text" value="\$22,000,000"/>
Termini or Intersection	<input type="text" value="From SR-174/N. Water Avenue intersection to new interchange onto SR-109."/>						
Project Description	<input type="text" value="Extend Albert Gallatin Avenue from SR-174/N. Water Avenue intersection to new interchange onto SR-109. Roadway will address congestion occurring on SR-6 and provide alternative route to access SR-109 and SR-386."/>						

Fiscal Year	Type of Work	Funding Type	Total Funds	Fed Funds	State Funds	Local Funds
<input type="text" value="2011"/>	<input type="text" value="PE"/>	<input type="text" value="U-STP"/>	<input type="text" value="\$810,750"/>	<input type="text" value="\$648,600"/>	<input type="text"/>	<input type="text" value="\$162,150"/>
<input type="text" value="2011"/>	<input type="text" value="ROW"/>	<input type="text" value="U-STP"/>	<input type="text" value="\$1,100,000"/>	<input type="text" value="\$880,000"/>	<input type="text"/>	<input type="text" value="\$220,000"/>
<input type="text" value="2012"/>	<input type="text" value="CONST"/>	<input type="text" value="U-RSV"/>	<input type="text" value="\$9,476,751"/>	<input type="text" value="\$7,581,401"/>	<input type="text"/>	<input type="text" value="\$1,895,350"/>
<input type="text" value="2013"/>	<input type="text" value="CONST"/>	<input type="text" value="U-RSV"/>	<input type="text" value="\$10,125,000"/>	<input type="text" value="\$8,100,000"/>	<input type="text"/>	<input type="text" value="\$2,025,000"/>

Amendment 1 #	<input type="text"/>	Adjustment 1 #	<input type="text"/>	Remarks
Amended on	<input type="text"/>	Adjusted on	<input type="text"/>	
Amendment 2 #	<input type="text"/>	Adjustment 2 #	<input type="text"/>	
Amended on	<input type="text"/>	Adjusted on	<input type="text"/>	



This map is for illustrative purposes only. Drawings depict conceptual project corridors and areas, not approved alignments.

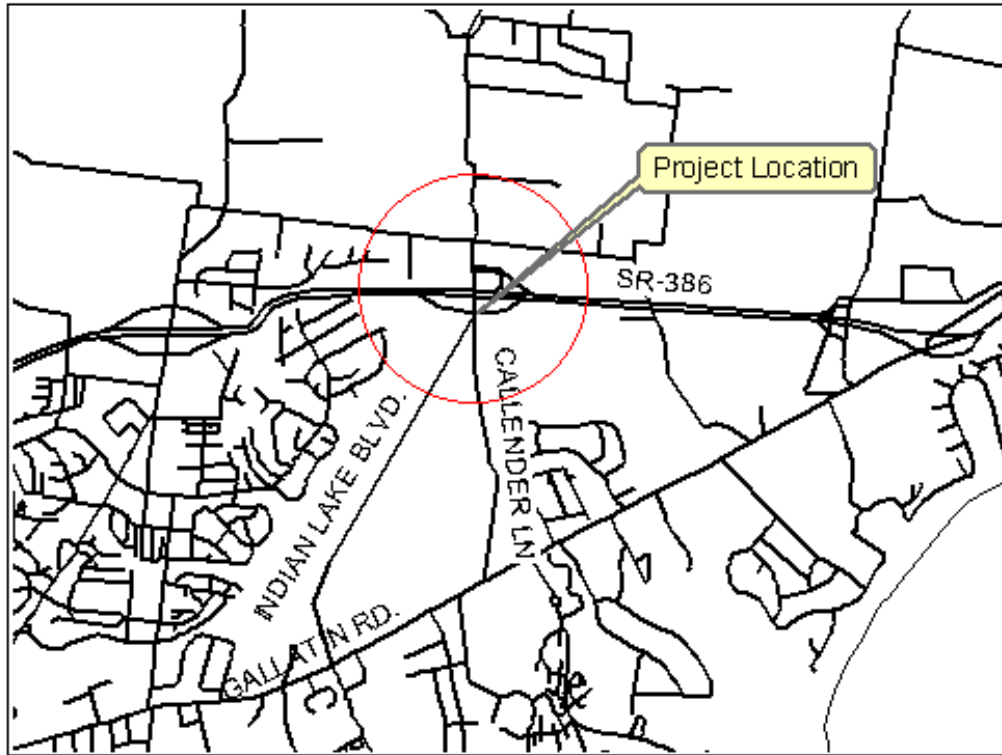


## Nashville Area MPO Fiscal Years 2011-2015 Transportation Improvement Program

TIP #	<input type="text" value="2008-52-034"/>	TDOT PIN #	<input type="text"/>	Improvement Type	<input type="text" value="Road Widening"/>	Lead Agency	<input type="text" value="Hendersonville"/>
County	<input type="text" value="Sumner"/>	Length	<input type="text" value="0.3"/> mi	RTP#	<input type="text" value="1054-263"/>	Conformity Status	<input type="text" value="Non-Exempt"/>
Route/Project Name	<input type="text" value="Indian Lake Boulevard"/>					Total Project Cost	<input type="text" value="\$6,450,830"/>
Termini or Intersection	<input type="text" value="State Route 386 Intersection"/>						
Project Description	<input type="text" value="Widen or replace existing 2-lane Indian Lake Blvd Bridge over SR-386 with a new 6-lane bridge and add extra lane to westbound on-ramp and lengthen this ramp. Bike/ped facilities to be included."/>						

Fiscal Year	Type of Work	Funding Type	Total Funds	Fed Funds	State Funds	Local Funds
<input type="text" value="2011"/>	<input type="text" value="CONST"/>	<input type="text" value="U-STP"/>	<input type="text" value="\$5,775,000"/>	<input type="text" value="\$4,620,000"/>	<input type="text"/>	<input type="text" value="\$1,155,000"/>
<input type="text"/>	<input type="text"/>	<input type="text"/>	<input type="text"/>	<input type="text"/>	<input type="text"/>	<input type="text"/>
<input type="text"/>	<input type="text"/>	<input type="text"/>	<input type="text"/>	<input type="text"/>	<input type="text"/>	<input type="text"/>
<input type="text"/>	<input type="text"/>	<input type="text"/>	<input type="text"/>	<input type="text"/>	<input type="text"/>	<input type="text"/>

Amendment 1 #	<input type="text"/>	Adjustment 1 #	<input type="text"/>	Remarks          
Amended on	<input type="text"/>	Adjusted on	<input type="text"/>	
Amendment 2 #	<input type="text"/>	Adjustment 2 #	<input type="text"/>	
Amended on	<input type="text"/>	Adjusted on	<input type="text"/>	



This map is for illustrative purposes only. Drawings depict conceptual project corridors and areas, not approved alignments.

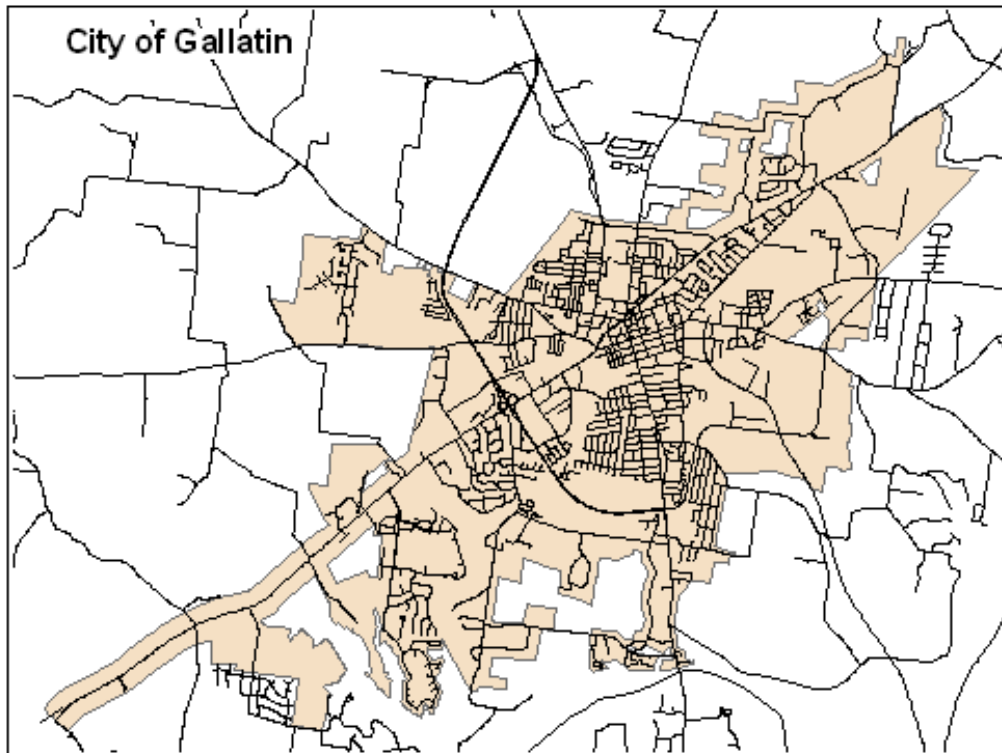


## Nashville Area MPO Fiscal Years 2011-2015 Transportation Improvement Program

TIP #	<input type="text" value="2008-54-033"/>	TDOT PIN #	<input type="text" value="110421.00"/>	Improvement Type	<input type="text" value="Intersection"/>	Lead Agency	<input type="text" value="Gallatin"/>
County	<input type="text" value="Sumner"/>	Length	<input type="text" value="0.0"/> mi	RTP#	<input type="text" value="1054-275"/>	Conformity Status	<input type="text" value="Exempt"/>
Route/Project Name	<input type="text" value="Various intersection improvements"/>					Total Project Cost	<input type="text" value="\$341,000"/>
Termini or Intersection	<input type="text" value="SR-6/SR-25 and SR-6/Locust Street"/>						
Project Description	<input type="text" value="Improve/upgrade existing signalization infrastructure."/>						

Fiscal Year	Type of Work	Funding Type	Total Funds	Fed Funds	State Funds	Local Funds
<input type="text" value="2011"/>	<input type="text" value="PE"/>	<input type="text" value="U-STP"/>	<input type="text" value="\$30,000"/>	<input type="text" value="\$30,000"/>	<input type="text"/>	<input type="text"/>
<input type="text" value="2011"/>	<input type="text" value="ROW"/>	<input type="text" value="U-STP"/>	<input type="text" value="\$20,000"/>	<input type="text" value="\$20,000"/>	<input type="text"/>	<input type="text"/>
<input type="text" value="2011"/>	<input type="text" value="CONST"/>	<input type="text" value="U-RSV"/>	<input type="text" value="\$191,000"/>	<input type="text" value="\$183,000"/>	<input type="text"/>	<input type="text" value="\$7,400"/>
<input type="text" value="2011"/>	<input type="text" value="CONST"/>	<input type="text" value="H-STP"/>	<input type="text" value="\$100,000"/>	<input type="text" value="\$100,000"/>	<input type="text"/>	<input type="text"/>

Amendment 1 #	<input type="text"/>	Adjustment 1 #	<input type="text"/>	Remarks          
Amended on	<input type="text"/>	Adjusted on	<input type="text"/>	
Amendment 2 #	<input type="text"/>	Adjustment 2 #	<input type="text"/>	
Amended on	<input type="text"/>	Adjusted on	<input type="text"/>	



This map is for illustrative purposes only. Drawings depict conceptual project corridors and areas, not approved alignments.

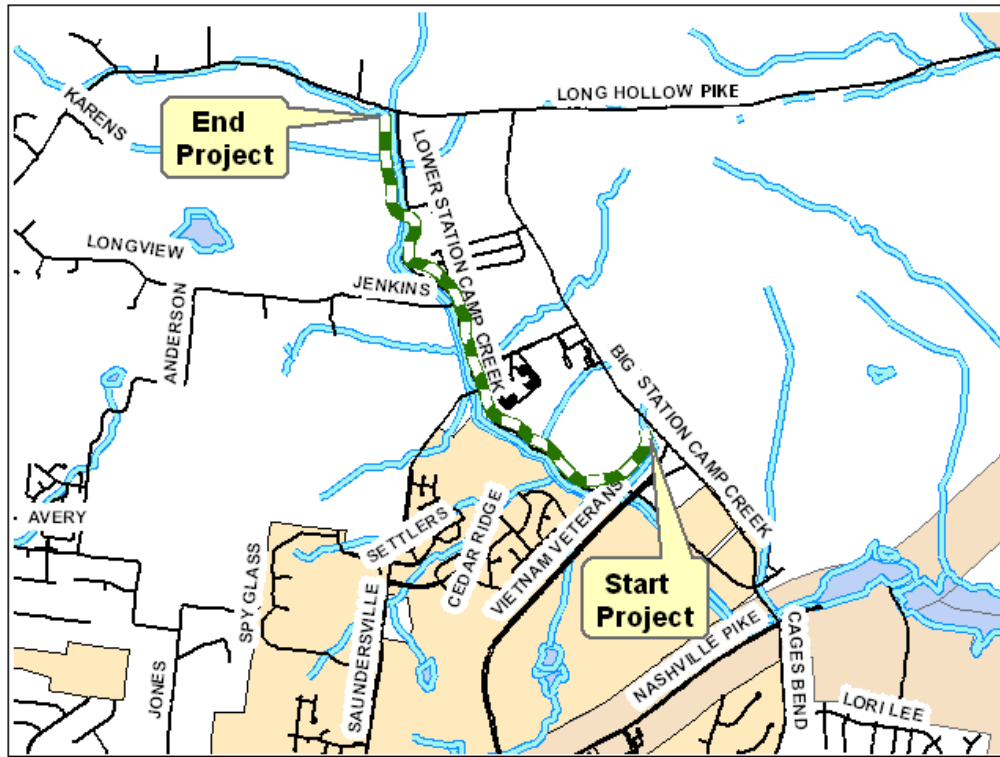


## Nashville Area MPO Fiscal Years 2011-2015 Transportation Improvement Program

TIP #	<input type="text" value="2008-56-082"/>	TDOT PIN #	<input type="text"/>	Improvement Type	<input type="text" value="Greenway"/>	Lead Agency	<input type="text" value="Sumner Co."/>
County	<input type="text" value="Sumner"/>	Length	<input type="text" value="2.8"/> mi	RTP#	<input type="text" value="1056-299"/>	Conformity Status	<input type="text" value="Exempt"/>
Route/Project Name	<input type="text" value="Lower Station Camp Creek Road Streetscape and Pavement Project (Greenway)"/>					Total Project Cost	<input type="text" value="\$2,500,000"/>
Termini or Intersection	<input type="text" value="Big Station Camp Blvd."/>						
Project Description	<input type="text" value="Convert a portion of the roadway to non-motorized transportation use. The project will be a combination of new alignment and existing roadway. It begins at Big Station camp Blvd. and extends to Lower Station Camp Creek Road."/>						

Fiscal Year	Type of Work	Funding Type	Total Funds	Fed Funds	State Funds	Local Funds
<input type="text" value="2011"/>	<input type="text" value="CONST"/>	<input type="text" value="HPP-TN239"/>	<input type="text" value="\$304,810"/>	<input type="text" value="\$243,848"/>	<input type="text"/>	<input type="text" value="\$60,962"/>
<input type="text" value="2011"/>	<input type="text" value="CONST"/>	<input type="text" value="HPP-TN239"/>	<input type="text" value="\$125,000"/>	<input type="text" value="\$100,000"/>	<input type="text"/>	<input type="text" value="\$25,000"/>
<input type="text" value="2011"/>	<input type="text" value="CONST"/>	<input type="text" value="CMAQ"/>	<input type="text" value="\$125,000"/>	<input type="text" value="\$100,000"/>	<input type="text"/>	<input type="text" value="\$25,000"/>
<input type="text"/>	<input type="text"/>	<input type="text"/>	<input type="text"/>	<input type="text"/>	<input type="text"/>	<input type="text"/>

Amendment 1 #	<input type="text"/>	Adjustment 1 #	<input type="text"/>	Remarks <input type="text" value="HPP = (ID 4967, Section 1702 SAFETEA-LU) TN239"/>
Amended on	<input type="text"/>	Adjusted on	<input type="text"/>	
Amendment 2 #	<input type="text"/>	Adjustment 2 #	<input type="text"/>	
Amended on	<input type="text"/>	Adjusted on	<input type="text"/>	



This map is for illustrative purposes only. Drawings depict conceptual project corridors and areas, not approved alignments.

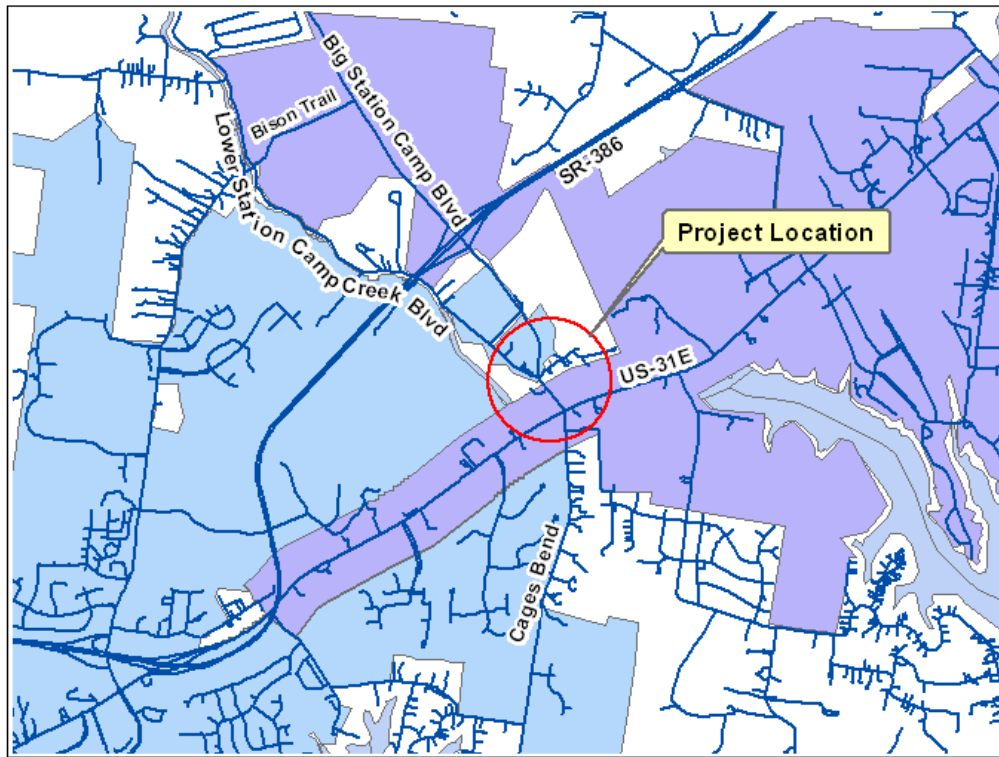


## Nashville Area MPO Fiscal Years 2011-2015 Transportation Improvement Program

TIP #	<input type="text" value="2009-54-024"/>	TDOT PIN #	<input type="text"/>	Improvement Type	<input type="text" value="Intersection"/>	Lead Agency	<input type="text" value="Gallatin"/>
County	<input type="text" value="Sumner"/>	Length	<input type="text" value="0.0"/> mi	RTP#	<input type="text" value="1052-115"/>	Conformity Status	<input type="text" value="Exempt"/>
Route/Project Name	<input type="text" value="Big Station Camp Creek Blvd"/>					Total Project Cost	<input type="text" value="\$5,000,000"/>
Termini or Intersection	<input type="text" value="Cages Bend Road"/>						
Project Description	<input type="text" value="Realignment of Big Station Camp Creek Blvd. and Cages Bend Road intersection. Replace bridge over Station Camp Creek."/>						

Fiscal Year	Type of Work	Funding Type	Total Funds	Fed Funds	State Funds	Local Funds
<input type="text" value="2011"/>	<input type="text" value="CONST"/>	<input type="text" value="LIC"/>	<input type="text" value="\$4,000,000"/>	<input type="text"/>	<input type="text" value="\$2,000,000"/>	<input type="text" value="\$2,000,000"/>
<input type="text"/>	<input type="text"/>	<input type="text"/>	<input type="text"/>	<input type="text"/>	<input type="text"/>	<input type="text"/>
<input type="text"/>	<input type="text"/>	<input type="text"/>	<input type="text"/>	<input type="text"/>	<input type="text"/>	<input type="text"/>
<input type="text"/>	<input type="text"/>	<input type="text"/>	<input type="text"/>	<input type="text"/>	<input type="text"/>	<input type="text"/>

Amendment 1 #	<input type="text" value="2009-041"/>	Adjustment 1 #	<input type="text"/>	Remarks
Amended on	<input type="text" value="5/20/2009"/>	Adjusted on	<input type="text"/>	
Amendment 2 #	<input type="text"/>	Adjustment 2 #	<input type="text"/>	
Amended on	<input type="text"/>	Adjusted on	<input type="text"/>	



This map is for illustrative purposes only. Drawings depict conceptual project corridors and areas, not approved alignments.



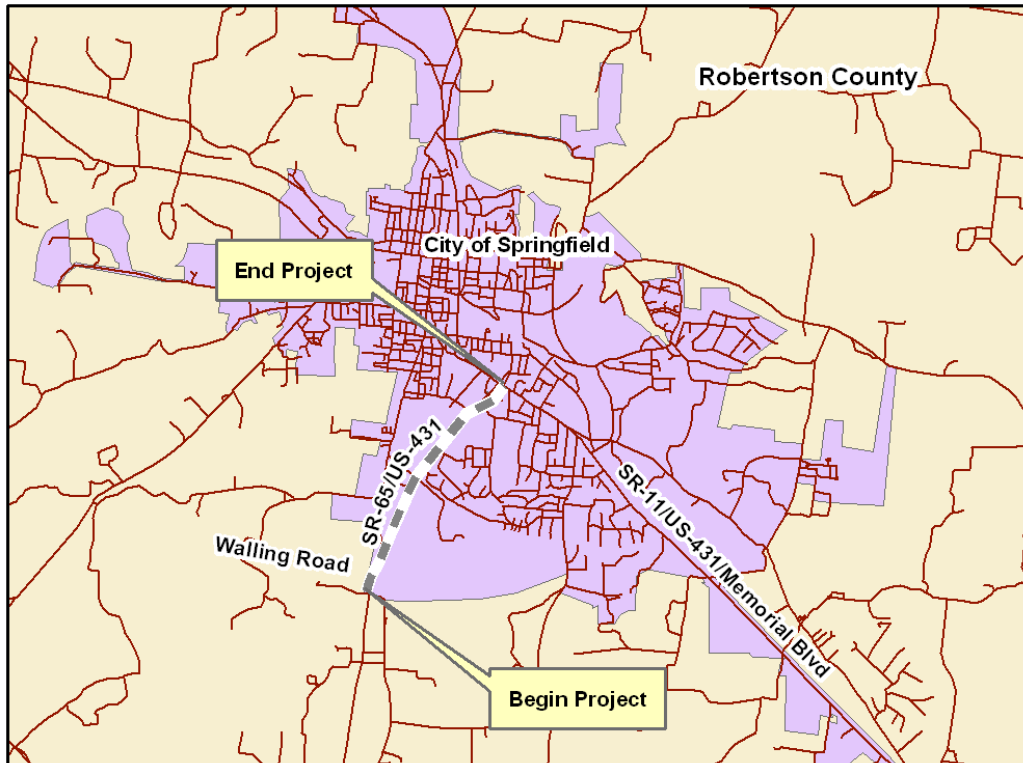


## Nashville Area MPO Fiscal Years 2011-2015 Transportation Improvement Program

TIP #	<input type="text" value="2010-32-004"/>	TDOT PIN #	<input type="text" value="102239.00"/>	Improvement Type	<input type="text" value="Road Widening"/>	Lead Agency	<input type="text" value="TDOT"/>
County	<input type="text" value="Robertson"/>	Length	<input type="text" value="2.1"/> mi	RTP#	<input type="text" value="1032-109"/>	Conformity Status	<input type="text" value="Non-exempt"/>
Route/Project Name	<input type="text" value="SR-65/US-431"/>					Total Project Cost	<input type="text" value="\$15,950,000"/>
Termini or Intersection	<input type="text" value="From Walling Road to SR-11/US-431 (Memorial Blvd)"/>						
Project Description	<input type="text" value="Widen from 2 lanes to 5 lanes"/>						

Fiscal Year	Type of Work	Funding Type	Total Funds	Fed Funds	State Funds	Local Funds
<input type="text" value="2011"/>	<input type="text" value="ROW (ADD)"/>	<input type="text" value="STP"/>	<input type="text" value="\$2,150,000"/>	<input type="text" value="\$1,720,000"/>	<input type="text" value="\$430,000"/>	<input type="text"/>
<input type="text"/>	<input type="text"/>	<input type="text"/>	<input type="text"/>	<input type="text"/>	<input type="text"/>	<input type="text"/>
<input type="text"/>	<input type="text"/>	<input type="text"/>	<input type="text"/>	<input type="text"/>	<input type="text"/>	<input type="text"/>
<input type="text"/>	<input type="text"/>	<input type="text"/>	<input type="text"/>	<input type="text"/>	<input type="text"/>	<input type="text"/>

Amendment 1 #	<input type="text"/>	Adjustment 1 #	<input type="text"/>	Remarks <div style="border: 1px solid black; height: 100px;"></div>
Amended on	<input type="text"/>	Adjusted on	<input type="text"/>	
Amendment 2 #	<input type="text"/>	Adjustment 2 #	<input type="text"/>	
Amended on	<input type="text"/>	Adjusted on	<input type="text"/>	



This map is for illustrative purposes only. Drawings depict conceptual project corridors and areas, not approved alignments.

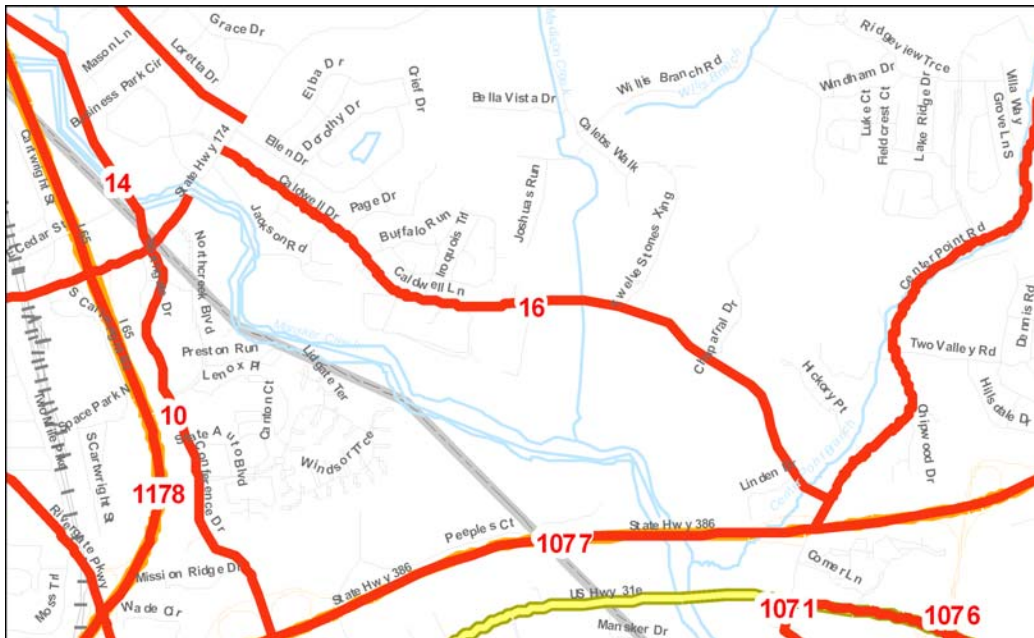


# Nashville Area MPO Fiscal Years 2011-2015 Transportation Improvement Program

TIP #	<input type="text" value="2011-17-019"/>	TDOT PIN #	<input type="text"/>	Improvement Type	<input type="text" value="Signalization"/>	Lead Agency	<input type="text" value="Goodlettsville"/>
County	<input type="text" value="Sumner"/>	Length	<input type="text" value="0.0"/> mi	RTP#	<input type="text" value="1057-248"/>	Conformity Status	<input type="text" value="Exempt"/>
Route/Project Name	<input type="text" value="Caldwell Drive/Indian Hills Pedestrian Control"/>					Total Project Cost	<input type="text" value="\$70,000"/>
Termini or Intersection	<input type="text" value="Intersection of Caldwell Drive and Indian Hills"/>						
Project Description	<input type="text" value="Add signalization at the intersection of Caldwell Drive and Indian Hills to provide safe crossing for pedestrian access to Moss-Wright Park."/>						

Fiscal Year	Type of Work	Funding Type	Total Funds	Fed Funds	State Funds	Local Funds
<input type="text" value="2011"/>	<input type="text" value="PE &amp; CONST"/>	<input type="text" value="CMAQ"/>	<input type="text" value="\$70,000"/>	<input type="text" value="\$70,000"/>	<input type="text"/>	<input type="text"/>
<input type="text"/>	<input type="text"/>	<input type="text"/>	<input type="text"/>	<input type="text"/>	<input type="text"/>	<input type="text"/>
<input type="text"/>	<input type="text"/>	<input type="text"/>	<input type="text"/>	<input type="text"/>	<input type="text"/>	<input type="text"/>
<input type="text"/>	<input type="text"/>	<input type="text"/>	<input type="text"/>	<input type="text"/>	<input type="text"/>	<input type="text"/>

Amendment 1 #	<input type="text"/>	Adjustment 1 #	<input type="text"/>	Remarks
Amended on	<input type="text"/>	Adjusted on	<input type="text"/>	
Amendment 2 #	<input type="text"/>	Adjustment 2 #	<input type="text"/>	
Amended on	<input type="text"/>	Adjusted on	<input type="text"/>	



This map is for illustrative purposes only. Drawings depict conceptual project corridors and areas, not approved alignments.

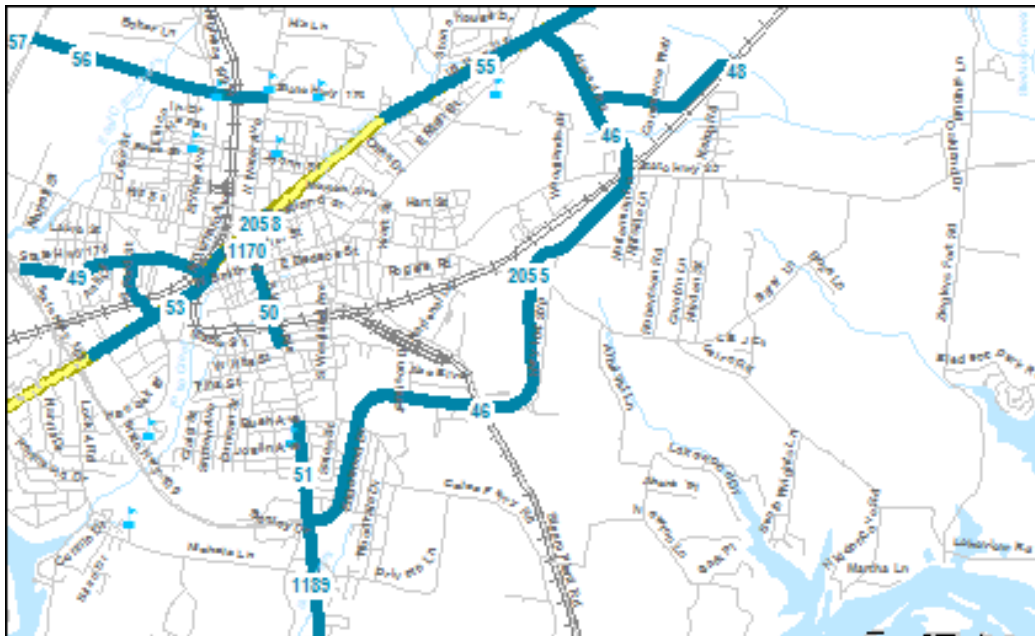


# Nashville Area MPO Fiscal Years 2011-2015 Transportation Improvement Program

TIP #	<input type="text" value="2011-510-017"/>	TDOT PIN #	<input type="text"/>	Improvement Type	<input type="text" value="Reconstruct"/>	Lead Agency	<input type="text" value="Gallatin"/>
County	<input type="text" value="Sumner"/>	Length	<input type="text" value="0.0"/> mi	RTP#	<input type="text" value="1052-273"/>	Conformity Status	<input type="text"/>
Route/Project Name	<input type="text" value="Airport Road Relocation"/>					Total Project Cost	<input type="text" value="\$4,198,526"/>
Termini or Intersection	<input type="text"/>						
Project Description	<input type="text" value="Relocation of a portion of Airport Road and all associated costs to allow for runway and hangar expansion at the Sumner County Regional Airport to meet FAA safety regulations and to attract business and industry to Gallatin and Sumner County."/>						

Fiscal Year	Type of Work	Funding Type	Total Funds	Fed Funds	State Funds	Local Funds
<input type="text" value="2011"/>	<input type="text" value="PE &amp; CONST"/>	<input type="text" value="HPP-TN281"/>	<input type="text" value="\$1,500,000"/>	<input type="text" value="\$1,500,000"/>	<input type="text"/>	<input type="text"/>
<input type="text"/>	<input type="text"/>	<input type="text"/>	<input type="text"/>	<input type="text"/>	<input type="text"/>	<input type="text"/>
<input type="text"/>	<input type="text"/>	<input type="text"/>	<input type="text"/>	<input type="text"/>	<input type="text"/>	<input type="text"/>
<input type="text"/>	<input type="text"/>	<input type="text"/>	<input type="text"/>	<input type="text"/>	<input type="text"/>	<input type="text"/>

Amendment 1 #	<input type="text"/>	Adjustment 1 #	<input type="text"/>	Remarks <input type="text" value="SAFETEA-LU (TN281)"/>
Amended on	<input type="text"/>	Adjusted on	<input type="text"/>	
Amendment 2 #	<input type="text"/>	Adjustment 2 #	<input type="text"/>	
Amended on	<input type="text"/>	Adjusted on	<input type="text"/>	



This map is for illustrative purposes only. Drawings depict conceptual project corridors and areas, not approved alignments.

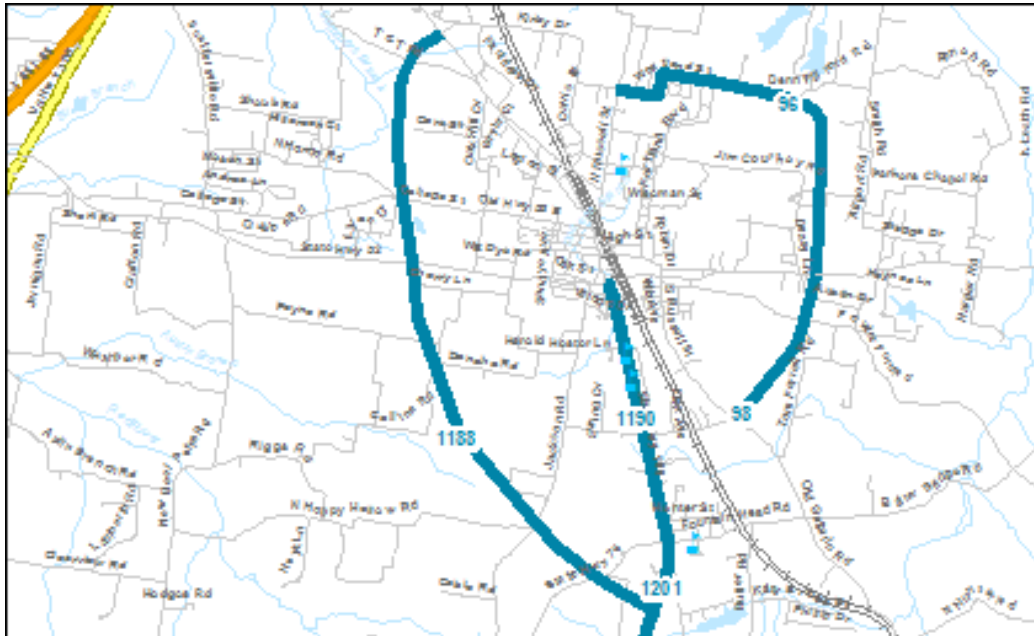


# Nashville Area MPO Fiscal Years 2011-2015 Transportation Improvement Program

TIP #	<input type="text" value="2011-51-108"/>	TDOT PIN #	<input type="text"/>	Improvement Type	<input type="text" value="New Roadway"/>	Lead Agency	<input type="text" value="TDOT"/>
County	<input type="text" value="Sumner"/>	Length	<input type="text" value="6.8"/> mi	RTP#	<input type="text" value="1051-222"/>	Conformity Status	<input type="text" value="Non-Exempt"/>
Route/Project Name	<input type="text" value="SR-109"/>					Total Project Cost	<input type="text" value="\$46,000,000"/>
Termini or Intersection	<input type="text" value="Proposed SR-109 - Portland Bypass"/>						
Project Description	<input style="height: 40px;" type="text"/>						

Fiscal Year	Type of Work	Funding Type	Total Funds	Fed Funds	State Funds	Local Funds
<input type="text" value="2011"/>	<input type="text" value="PE-N"/>	<input type="text" value="NHS"/>	<input type="text" value="\$1,000,000"/>	<input type="text" value="\$800,000"/>	<input type="text" value="\$200,000"/>	<input type="text"/>
<input type="text" value="2011"/>	<input type="text" value="PE-D"/>	<input type="text" value="NHS"/>	<input type="text" value="\$2,000,000"/>	<input type="text" value="\$1,600,000"/>	<input type="text" value="\$400,000"/>	<input type="text"/>
<input type="text"/>	<input type="text"/>	<input type="text"/>	<input type="text"/>	<input type="text"/>	<input type="text"/>	<input type="text"/>
<input type="text"/>	<input type="text"/>	<input type="text"/>	<input type="text"/>	<input type="text"/>	<input type="text"/>	<input type="text"/>

Amendment 1 #	<input type="text"/>	Adjustment 1 #	<input type="text"/>	Remarks  <input style="width: 100%; height: 100%;" type="text"/>
Amended on	<input type="text"/>	Adjusted on	<input type="text"/>	
Amendment 2 #	<input type="text"/>	Adjustment 2 #	<input type="text"/>	
Amended on	<input type="text"/>	Adjusted on	<input type="text"/>	



This map is for illustrative purposes only. Drawings depict conceptual project corridors and areas, not approved alignments.

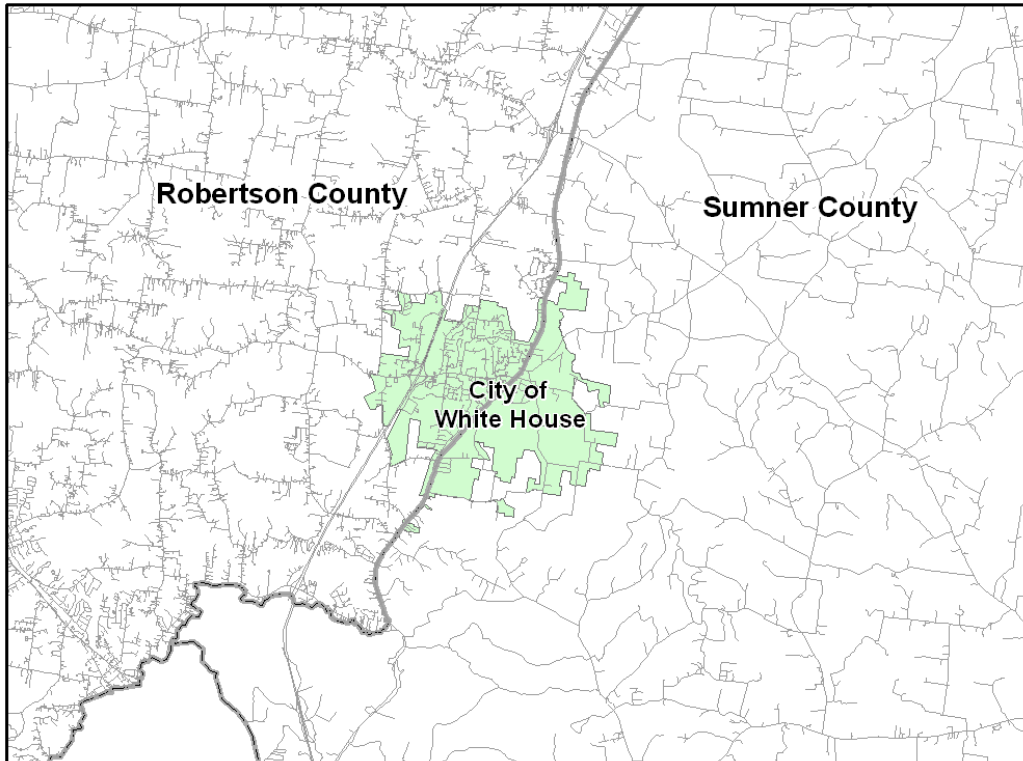


# Nashville Area MPO Fiscal Years 2011-2015 Transportation Improvement Program

TIP #	<input type="text" value="2011-54-156"/>	TDOT PIN #	<input type="text"/>	Improvement Type	<input type="text" value="Intersection"/>	Lead Agency	<input type="text" value="White House"/>
County	<input type="text" value="Sumner"/>	Length	<input type="text" value="0.0"/> mi	RTP#	<input type="text" value="1054-255"/>	Conformity Status	<input type="text" value="Non-Exempt"/>
Route/Project Name	<input type="text" value="Tyree Springs (SR-258) / S Palmers Chapel Intersection Improvements"/>					Total Project Cost	<input type="text" value="\$350,000"/>
Termini or Intersection	<input type="text" value="Tyree Springs Rd @ South Palmers Chapel Road"/>						
Project Description	<input type="text" value="Intersection Improvements including the construction of a dedicated left turn lane on Tyree Springs Road (SR 258) and a dedicated right turn lane on South Palmers Chapel Road."/>						

Fiscal Year	Type of Work	Funding Type	Total Funds	Fed Funds	State Funds	Local Funds
<input type="text" value="2011"/>	<input type="text" value="CONST"/>	<input type="text" value="SAFETY"/>	<input type="text" value="\$90,000"/>	<input type="text"/>	<input type="text" value="\$90,000"/>	<input type="text"/>
<input type="text" value="2011"/>	<input type="text" value="CONST"/>	<input type="text" value="L-STP"/>	<input type="text" value="\$260,000"/>	<input type="text" value="\$187,916"/>	<input type="text"/>	<input type="text" value="\$72,048"/>
<input type="text"/>	<input type="text"/>	<input type="text"/>	<input type="text"/>	<input type="text"/>	<input type="text"/>	<input type="text"/>
<input type="text"/>	<input type="text"/>	<input type="text"/>	<input type="text"/>	<input type="text"/>	<input type="text"/>	<input type="text"/>

Amendment 1 #	<input type="text"/>	Adjustment 1 #	<input type="text"/>	Remarks <input type="text" value="Local Option Safety Grant"/>
Amended on	<input type="text"/>	Adjusted on	<input type="text"/>	
Amendment 2 #	<input type="text"/>	Adjustment 2 #	<input type="text"/>	
Amended on	<input type="text"/>	Adjusted on	<input type="text"/>	



This map is for illustrative purposes only. Drawings depict conceptual project corridors and areas, not approved alignments.

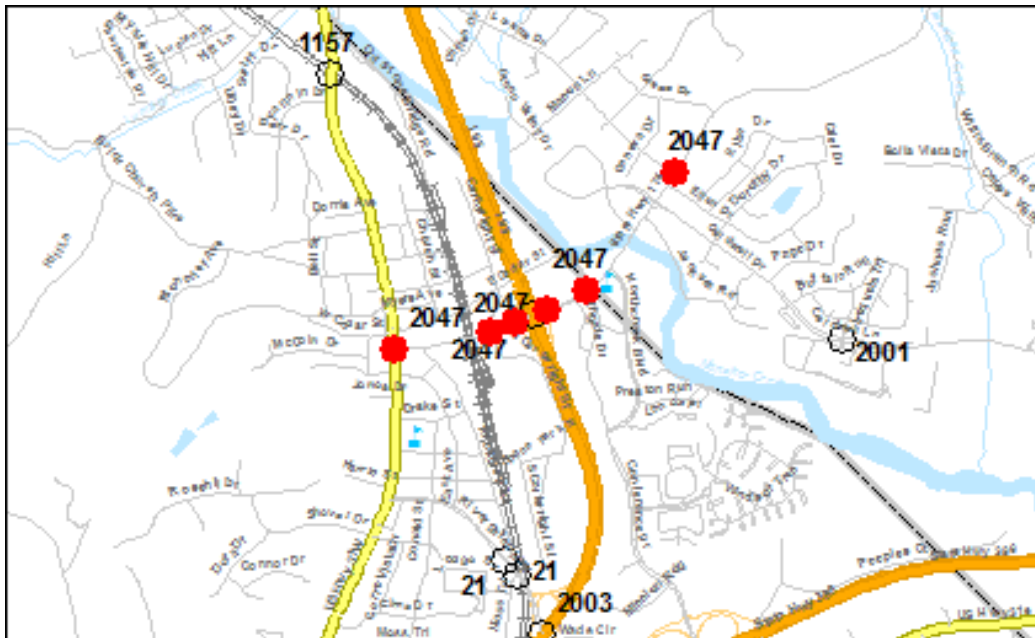


# Nashville Area MPO Fiscal Years 2011-2015 Transportation Improvement Program

TIP #	<input type="text" value="2011-57-024"/>	TDOT PIN #	<input type="text"/>	Improvement Type	<input type="text" value="Signalization"/>	Lead Agency	<input type="text" value="Goodlettsville"/>
County	<input type="text" value="Sumner"/>	Length	<input type="text" value="0.0"/> mi	RTP#	<input type="text" value="1017-267"/>	Conformity Status	<input type="text" value="Exempt"/>
Route/Project Name	<input type="text" value="Long Hollow Pike Traffic Signal Synchronization"/>					Total Project Cost	<input type="text" value="\$300,000"/>
Termini or Intersection	<input type="text" value="Beginning on South Main Street at Memorial Drive north to Long Hollow Pike then east along Long Hollow Pike to Loretta Drive."/>						
Project Description	<input type="text" value="Install a coordinated (fiber optic) traffic signal system for several Long Hollow Pike intersections. Cameras will be installed at each intersection and existing incandescent signal heads will be converted to LED."/>						

Fiscal Year	Type of Work	Funding Type	Total Funds	Fed Funds	State Funds	Local Funds
<input type="text" value="2011"/>	<input type="text" value="PE &amp; CONST"/>	<input type="text" value="CMAQ"/>	<input type="text" value="\$300,000"/>	<input type="text" value="\$300,000"/>	<input type="text"/>	<input type="text"/>
<input type="text"/>	<input type="text"/>	<input type="text"/>	<input type="text"/>	<input type="text"/>	<input type="text"/>	<input type="text"/>
<input type="text"/>	<input type="text"/>	<input type="text"/>	<input type="text"/>	<input type="text"/>	<input type="text"/>	<input type="text"/>
<input type="text"/>	<input type="text"/>	<input type="text"/>	<input type="text"/>	<input type="text"/>	<input type="text"/>	<input type="text"/>

Amendment 1 #	<input type="text"/>	Adjustment 1 #	<input type="text"/>	Remarks <div style="border: 1px solid black; height: 100px; width: 100%;"></div>
Amended on	<input type="text"/>	Adjusted on	<input type="text"/>	
Amendment 2 #	<input type="text"/>	Adjustment 2 #	<input type="text"/>	
Amended on	<input type="text"/>	Adjusted on	<input type="text"/>	



This map is for illustrative purposes only. Drawings depict conceptual project corridors and areas, not approved alignments.



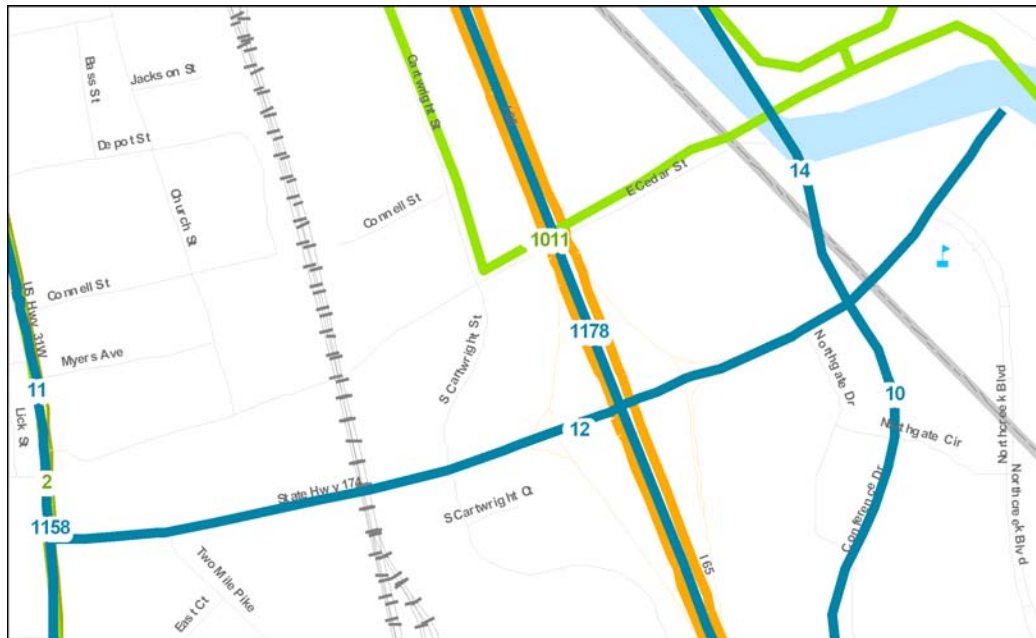


# Nashville Area MPO Fiscal Years 2011-2015 Transportation Improvement Program

TIP #	<input type="text" value="2011-59-025"/>	TDOT PIN #	<input type="text"/>	Improvement Type	<input type="text"/>	Lead Agency	<input type="text" value="Goodlettsville"/>
County	<input type="text" value="Sumner"/>	Length	<input type="text" value="0.0"/> mi	RTP#	<input type="text" value="1086-105"/>	Conformity Status	<input type="text" value="Exempt"/>
Route/Project Name	<input type="text" value="Long Hollow Pike Street Lighting Improvements"/>					Total Project Cost	<input type="text" value="\$125,000"/>
Termini or Intersection	<input type="text" value="City of Goodlettsville"/>						
Project Description	<input type="text" value="Installation of a comprehensive street lighting system along Long Hollow Pike within the corporate limits of the City of Goodlettsville."/>						

Fiscal Year	Type of Work	Funding Type	Total Funds	Fed Funds	State Funds	Local Funds
<input type="text" value="2012"/>	<input type="text" value="PE"/>	<input type="text" value="LOCAL"/>	<input type="text" value="\$12,500"/>	<input type="text"/>	<input type="text"/>	<input type="text" value="\$12,500"/>
<input type="text"/>	<input type="text"/>	<input type="text"/>	<input type="text"/>	<input type="text"/>	<input type="text"/>	<input type="text"/>
<input type="text"/>	<input type="text"/>	<input type="text"/>	<input type="text"/>	<input type="text"/>	<input type="text"/>	<input type="text"/>
<input type="text"/>	<input type="text"/>	<input type="text"/>	<input type="text"/>	<input type="text"/>	<input type="text"/>	<input type="text"/>

Amendment 1 #	<input type="text"/>	Adjustment 1 #	<input type="text"/>	Remarks <div style="border: 1px solid black; height: 100px;"></div>
Amended on	<input type="text"/>	Adjusted on	<input type="text"/>	
Amendment 2 #	<input type="text"/>	Adjustment 2 #	<input type="text"/>	
Amended on	<input type="text"/>	Adjusted on	<input type="text"/>	



This map is for illustrative purposes only. Drawings depict conceptual project corridors and areas, not approved alignments.

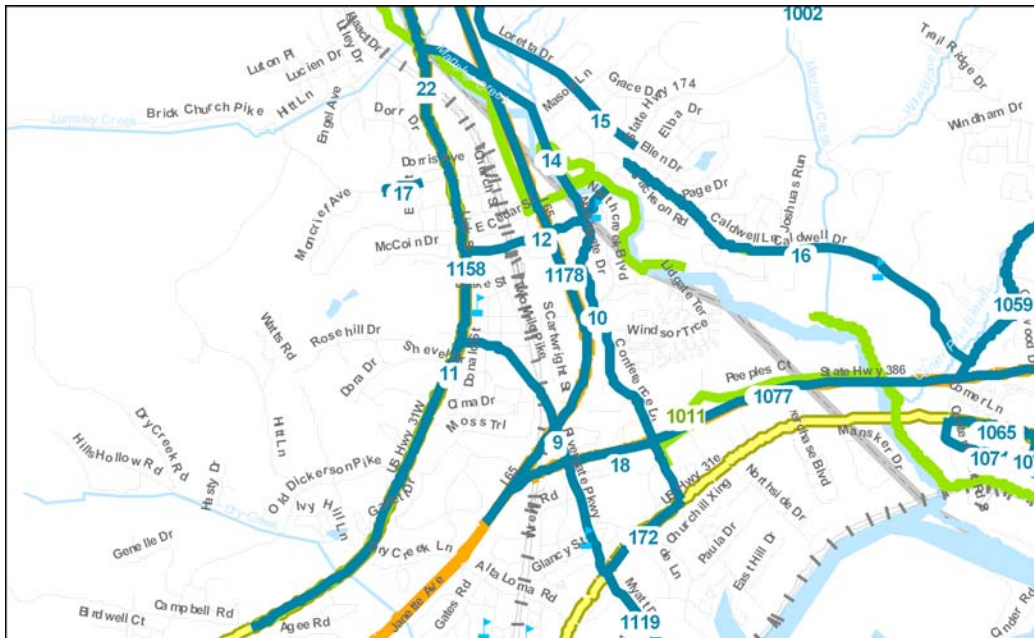


# Nashville Area MPO Fiscal Years 2011-2015 Transportation Improvement Program

TIP #	<input type="text" value="2011-59-027"/>	TDOT PIN #	<input type="text"/>	Improvement Type	<input type="text"/>	Lead Agency	<input type="text" value="Goodlettsville"/>
County	<input type="text" value="Sumner"/>	Length	<input type="text" value="0.0"/> mi	RTP#	<input type="text" value="1056-104"/>	Conformity Status	<input type="text" value="Exempt"/>
Route/Project Name	<input type="text" value="US-41 (Springfield Hwy)/US 31W (Louisville Hwy) Street Lighting Improvements"/>					Total Project Cost	<input type="text" value="\$70,000"/>
Termini or Intersection	<input type="text" value="From Old Springfield Hwy to Conference Dr"/>						
Project Description	<input type="text" value="Installation of a comprehensive street lighting system along US41 and US 31W within the Sumner County portion of the City of Goodlettsville."/>						

Fiscal Year	Type of Work	Funding Type	Total Funds	Fed Funds	State Funds	Local Funds
<input type="text" value="2012"/>	<input type="text" value="PE"/>	<input type="text" value="LOCAL"/>	<input type="text" value="\$7,000"/>	<input type="text"/>	<input type="text"/>	<input type="text" value="\$7,000"/>
<input type="text"/>	<input type="text"/>	<input type="text"/>	<input type="text"/>	<input type="text"/>	<input type="text"/>	<input type="text"/>
<input type="text"/>	<input type="text"/>	<input type="text"/>	<input type="text"/>	<input type="text"/>	<input type="text"/>	<input type="text"/>
<input type="text"/>	<input type="text"/>	<input type="text"/>	<input type="text"/>	<input type="text"/>	<input type="text"/>	<input type="text"/>

Amendment 1 #	<input type="text"/>	Adjustment 1 #	<input type="text"/>	Remarks <div style="border: 1px solid black; height: 100px; width: 100%;"></div>
Amended on	<input type="text"/>	Adjusted on	<input type="text"/>	
Amendment 2 #	<input type="text"/>	Adjustment 2 #	<input type="text"/>	
Amended on	<input type="text"/>	Adjusted on	<input type="text"/>	



This map is for illustrative purposes only. Drawings depict conceptual project corridors and areas, not approved alignments.

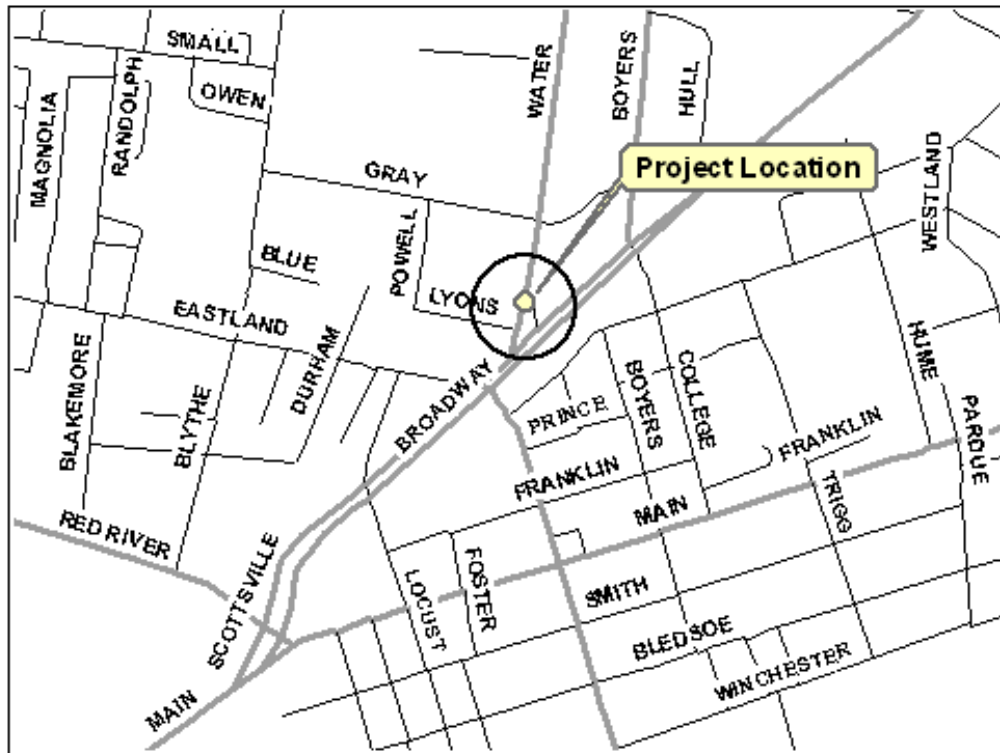


# Nashville Area MPO Fiscal Years 2011-2015 Transportation Improvement Program

TIP #	<input type="text" value="99-New-23"/>	TDOT PIN #	<input type="text" value="040594.00"/>	Improvement Type	<input type="text" value="Intersection"/>	Lead Agency	<input type="text" value="Gallatin"/>
County	<input type="text" value="Sumner"/>	Length	<input type="text"/> mi	RTP#	<input type="text" value="1052-276"/>	Conformity Status	<input type="text"/>
Route/Project Name	<input type="text" value="East Broadway (SR-6)"/>					Total Project Cost	<input type="text" value="\$2,170,836"/>
Termini or Intersection	<input type="text" value="North Water Ave (SR-109)"/>						
Project Description	<input type="text" value="Realignment of North Water Avenue and signalization, roadway and streetscape improvements on SR-6 from West Eastland Avenue to College Street."/>						

Fiscal Year	Type of Work	Funding Type	Total Funds	Fed Funds	State Funds	Local Funds
<input type="text" value="2011"/>	<input type="text" value="PE"/>	<input type="text" value="U-STP"/>	<input type="text" value="\$59,000"/>	<input type="text" value="\$59,000"/>	<input type="text"/>	<input type="text"/>
<input type="text" value="2011"/>	<input type="text" value="ROW"/>	<input type="text" value="U-STP"/>	<input type="text" value="\$583,000"/>	<input type="text" value="\$583,000"/>	<input type="text"/>	<input type="text"/>
<input type="text" value="2011"/>	<input type="text" value="CONST"/>	<input type="text" value="U-RSV"/>	<input type="text" value="\$126,000"/>	<input type="text" value="\$100,800"/>	<input type="text" value="\$25,200"/>	<input type="text"/>
<input type="text"/>	<input type="text"/>	<input type="text"/>	<input type="text"/>	<input type="text"/>	<input type="text"/>	<input type="text"/>

Amendment 1 #	<input type="text"/>	Adjustment 1 #	<input type="text"/>	Remarks <input type="text" value="Installation of traffic signal is eligible for 100% federal funding."/>
Amended on	<input type="text"/>	Adjusted on	<input type="text"/>	
Amendment 2 #	<input type="text"/>	Adjustment 2 #	<input type="text"/>	
Amended on	<input type="text"/>	Adjusted on	<input type="text"/>	



This map is for illustrative purposes only. Drawings depict conceptual project corridors and areas, not approved alignments.

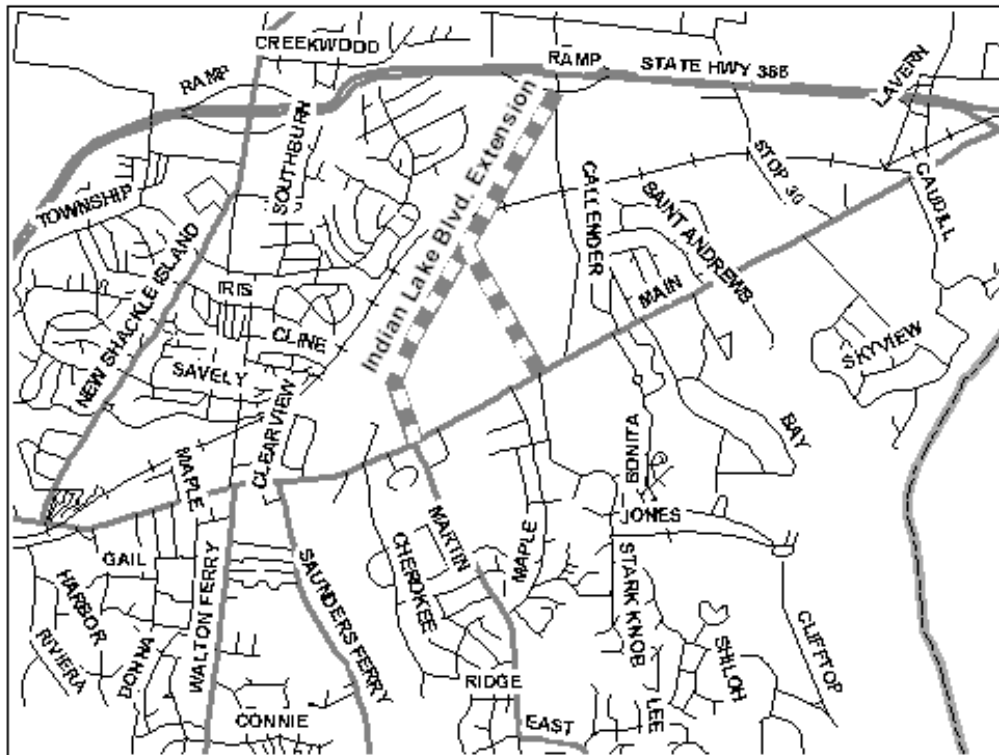


## Nashville Area MPO Fiscal Years 2011-2015 Transportation Improvement Program

TIP #	<input type="text" value="99-New-28"/>	TDOT PIN #	<input type="text"/>	Improvement Type	<input type="text" value="Road Widening"/>	Lead Agency	<input type="text" value="Hendersonville"/>
County	<input type="text" value="Sumner"/>	Length	<input type="text" value="2.0"/> mi	RTP#	<input type="text" value="1052-174"/>	Conformity Status	<input type="text" value="Non-Exempt"/>
Route/Project Name	<input type="text" value="Drakes Creek / Indian Lake Blvd Widening"/>					Total Project Cost	<input type="text" value="\$1,400,000"/>
Termini or Intersection	<input type="text" value="From SR-386 to Stop 30 Road"/>						
Project Description	<input type="text" value="Widen Indian Lake Blvd from SR-386 to Stop 30 Road from 2-lanes to 5 and install traffic signals and turn lanes at Stop 30 Road."/>						

Fiscal Year	Type of Work	Funding Type	Total Funds	Fed Funds	State Funds	Local Funds
<input type="text" value="2012"/>	<input type="text" value="PE"/>	<input type="text" value="U-STP"/>	<input type="text" value="\$100,000"/>	<input type="text" value="\$80,000"/>	<input type="text"/>	<input type="text" value="\$20,000"/>
<input type="text" value="2012"/>	<input type="text" value="ROW/UTILITIES"/>	<input type="text" value="U-STP"/>	<input type="text" value="\$300,000"/>	<input type="text" value="\$240,000"/>	<input type="text"/>	<input type="text" value="\$60,000"/>
<input type="text" value="2013"/>	<input type="text" value="CONST"/>	<input type="text" value="U-RSV"/>	<input type="text" value="\$1,000,000"/>	<input type="text" value="\$800,000"/>	<input type="text"/>	<input type="text" value="\$200,000"/>
<input type="text"/>	<input type="text"/>	<input type="text"/>	<input type="text"/>	<input type="text"/>	<input type="text"/>	<input type="text"/>

Amendment 1 #	<input type="text"/>	Adjustment 1 #	<input type="text"/>	Remarks
Amended on	<input type="text"/>	Adjusted on	<input type="text"/>	
Amendment 2 #	<input type="text"/>	Adjustment 2 #	<input type="text"/>	
Amended on	<input type="text"/>	Adjusted on	<input type="text"/>	



This map is for illustrative purposes only. Drawings depict conceptual project corridors and areas, not approved alignments.

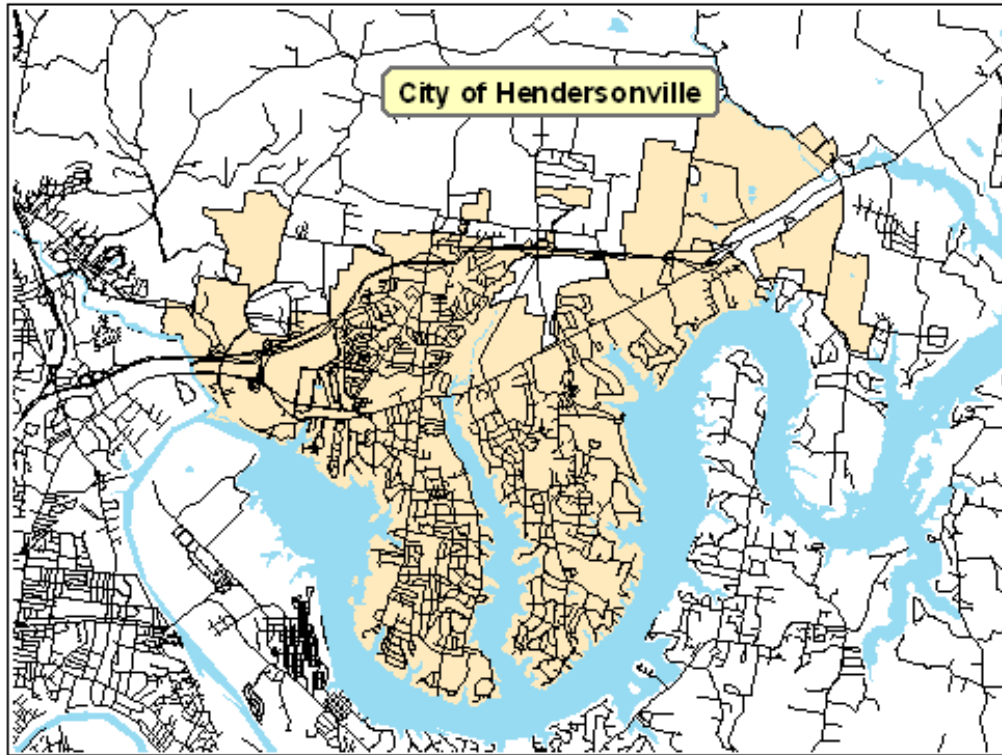


## Nashville Area MPO Fiscal Years 2011-2015 Transportation Improvement Program

TIP #	<input type="text" value="99-New-29"/>	TDOT PIN #	<input type="text"/>	Improvement Type	<input type="text" value="Signalization"/>	Lead Agency	<input type="text" value="Hendersonville"/>
County	<input type="text" value="Sumner"/>	Length	<input type="text"/> mi	RTP#	<input type="text" value="1057-178"/>	Conformity Status	<input type="text" value="Exempt"/>
Route/Project Name	<input type="text" value="Hendersonville Closed Loop and Signal Upgrade"/>					Total Project Cost	<input type="text" value="\$1,607,874"/>
Termini or Intersection	<input type="text" value="Main Street(SR-6); New Shackle Island Road (SR-258); Freehill Road"/>						
Project Description	<input type="text" value="Connect, synchronize and otherwise upgrade traffic signals on Main Street, New Shackle Island Road, Indian Lake Blvd and other locations."/>						

Fiscal Year	Type of Work	Funding Type	Total Funds	Fed Funds	State Funds	Local Funds
<input type="text" value="2011"/>	<input type="text" value="CONST"/>	<input type="text" value="U-STP"/>	<input type="text" value="\$966,614"/>	<input type="text" value="\$966,614"/>	<input type="text"/>	<input type="text"/>
<input type="text"/>	<input type="text"/>	<input type="text"/>	<input type="text"/>	<input type="text"/>	<input type="text"/>	<input type="text"/>
<input type="text"/>	<input type="text"/>	<input type="text"/>	<input type="text"/>	<input type="text"/>	<input type="text"/>	<input type="text"/>
<input type="text"/>	<input type="text"/>	<input type="text"/>	<input type="text"/>	<input type="text"/>	<input type="text"/>	<input type="text"/>

Amendment 1 #	<input type="text"/>	Adjustment 1 #	<input type="text"/>	Remarks
Amended on	<input type="text"/>	Adjusted on	<input type="text"/>	
Amendment 2 #	<input type="text"/>	Adjustment 2 #	<input type="text"/>	
Amended on	<input type="text"/>	Adjusted on	<input type="text"/>	



This map is for illustrative purposes only. Drawings depict conceptual project corridors and areas, not approved alignments.

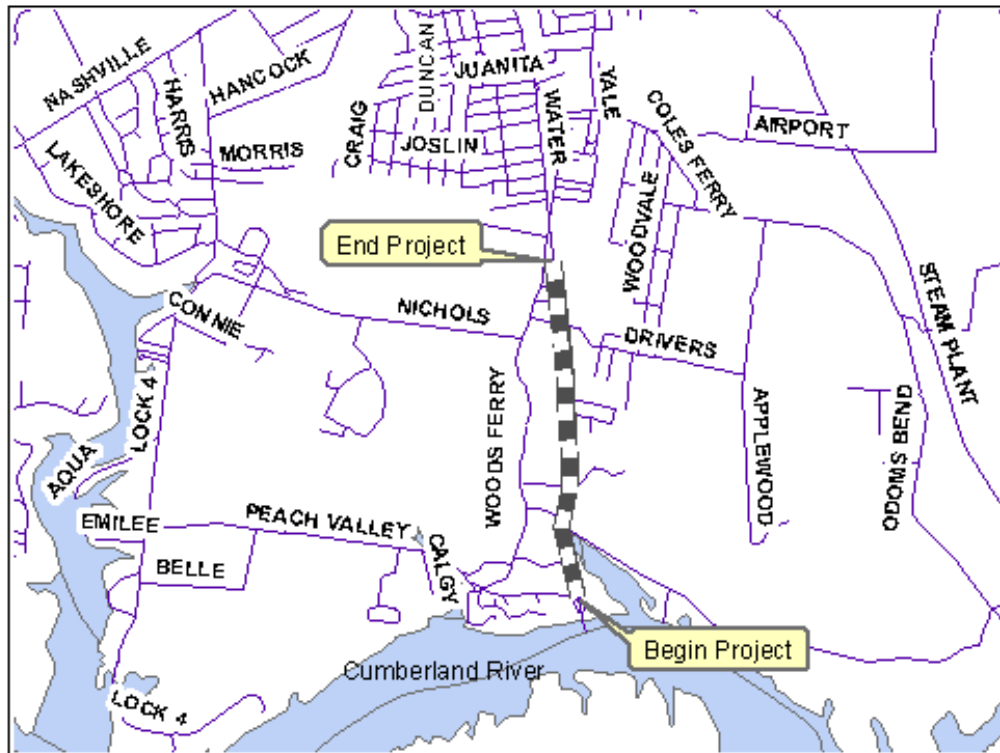


## Nashville Area MPO Fiscal Years 2011-2015 Transportation Improvement Program

TIP #	<input type="text" value="AM-018"/>	TDOT PIN #	<input type="text" value="100286.00"/>	Improvement Type	<input type="text" value="Road Widening"/>	Lead Agency	<input type="text" value="TDOT"/>
County	<input type="text" value="Sumner"/>	Length	<input type="text" value="1.3"/> mi	RTP#	<input type="text" value="1052-223"/>	Conformity Status	<input type="text" value="Non-Exempt"/>
Route/Project Name	<input type="text" value="SR-109"/>					Total Project Cost	<input type="text" value="\$9,300,000"/>
Termini or Intersection	<input type="text" value="North of Cumberland River Bridge to SR-109 Bypass"/>						
Project Description	<input type="text" value="Widen from 2 lanes to 4/5 lanes"/>						

Fiscal Year	Type of Work	Funding Type	Total Funds	Fed Funds	State Funds	Local Funds
<input type="text" value="2011"/>	<input type="text" value="ROW"/>	<input type="text" value="HPP"/>	<input type="text" value="\$2,107,730"/>	<input type="text" value="\$1,686,184"/>	<input type="text" value="\$421,546"/>	<input type="text"/>
<input type="text"/>	<input type="text"/>	<input type="text"/>	<input type="text"/>	<input type="text"/>	<input type="text"/>	<input type="text"/>
<input type="text"/>	<input type="text"/>	<input type="text"/>	<input type="text"/>	<input type="text"/>	<input type="text"/>	<input type="text"/>
<input type="text"/>	<input type="text"/>	<input type="text"/>	<input type="text"/>	<input type="text"/>	<input type="text"/>	<input type="text"/>

Amendment 1 #	<input type="text"/>	Adjustment 1 #	<input type="text"/>	Remarks <input type="text" value="HPP ID# TN049 (Section 1602-TEA-21)"/>
Amended on	<input type="text"/>	Adjusted on	<input type="text"/>	
Amendment 2 #	<input type="text"/>	Adjustment 2 #	<input type="text"/>	
Amended on	<input type="text"/>	Adjusted on	<input type="text"/>	



This map is for illustrative purposes only. Drawings depict conceptual project corridors and areas, not approved alignments.

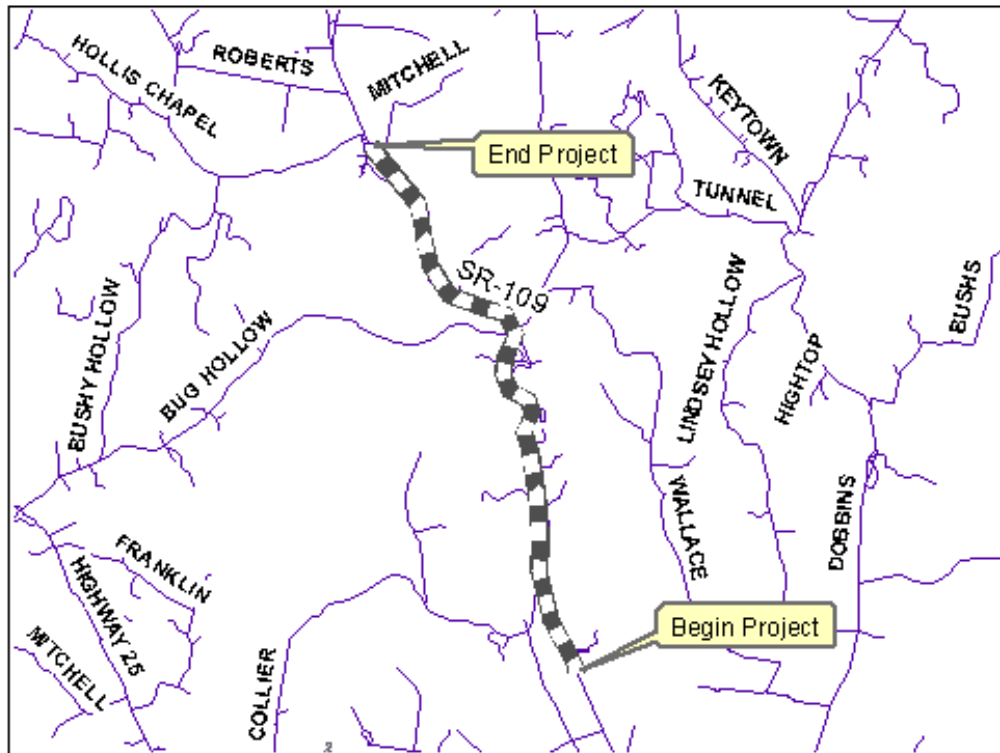


## Nashville Area MPO Fiscal Years 2011-2015 Transportation Improvement Program

TIP #	<input type="text" value="AM-019"/>	TDOT PIN #	<input type="text" value="100283.00"/>	Improvement Type	<input type="text" value="Road Widening"/>	Lead Agency	<input type="text" value="TDOT"/>
County	<input type="text" value="Sumner"/>	Length	<input type="text" value="5.0"/> mi	RTP#	<input type="text" value="1051-233"/>	Conformity Status	<input type="text" value="Non-Exempt"/>
Route/Project Name	<input type="text" value="SR-109"/>					Total Project Cost	<input type="text" value="\$36,073,000"/>
Termini or Intersection	<input type="text" value="SR-109 bypass to south of Hollis Chapel Rd"/>						
Project Description	<input type="text" value="Widening and paving of 2-lane to 4 lane"/>						

Fiscal Year	Type of Work	Funding Type	Total Funds	Fed Funds	State Funds	Local Funds
<input type="text" value="2011"/>	<input type="text" value="CONST (ADD)"/>	<input type="text" value="STP"/>	<input type="text" value="\$2,000,000"/>	<input type="text" value="\$1,600,000"/>	<input type="text" value="\$400,000"/>	<input type="text"/>
<input type="text"/>	<input type="text"/>	<input type="text"/>	<input type="text"/>	<input type="text"/>	<input type="text"/>	<input type="text"/>
<input type="text"/>	<input type="text"/>	<input type="text"/>	<input type="text"/>	<input type="text"/>	<input type="text"/>	<input type="text"/>
<input type="text"/>	<input type="text"/>	<input type="text"/>	<input type="text"/>	<input type="text"/>	<input type="text"/>	<input type="text"/>

Amendment 1 #	<input type="text"/>	Adjustment 1 #	<input type="text"/>	Remarks <input type="text" value="PIN # 100283=Stage Const., 100283.01=Pave"/>
Amended on	<input type="text"/>	Adjusted on	<input type="text"/>	
Amendment 2 #	<input type="text"/>	Adjustment 2 #	<input type="text"/>	
Amended on	<input type="text"/>	Adjusted on	<input type="text"/>	



This map is for illustrative purposes only. Drawings depict conceptual project corridors and areas, not approved alignments.